

Catalog

Enhance your
daily practice



Enhance your daily practice

It's with pride and gratitude that I address the incredible individuals who make up the heart and soul of Itena Clinical. Whether you're an integral part of our dedicated team, a valued distributor, or a trusted dentist partnering with us, you are an essential thread of our success.

Our mindset: Share commitment to enhance the daily practice of all Oral health professionals.

For our Amazing Team: Your hard work, creativity, and unwavering dedication are the driving forces behind our accomplishments. Each one of you contributes to the vibrant culture that sets us apart. Together, we're building a family bound by shared values of **Agility, Ambition and Customer First**.

For our Valued Distributors: Your commitment to delivering our products with excellence and integrity is the cornerstone of our success. We are partners in a journey that goes beyond transactions, it's a shared mission to bring quality and accessible Dental healthcare to every corner of the globe!

For our Trusted Dentists: We are honored to be your chosen partner, providing innovative solutions that enhance daily the quality of care you deliver. Together, we are redefining the standards of dental excellence.

We are ALL Itena Clinical.

Let's continuously develop, work hard, and enhance the daily practice that have the power to transform lives.

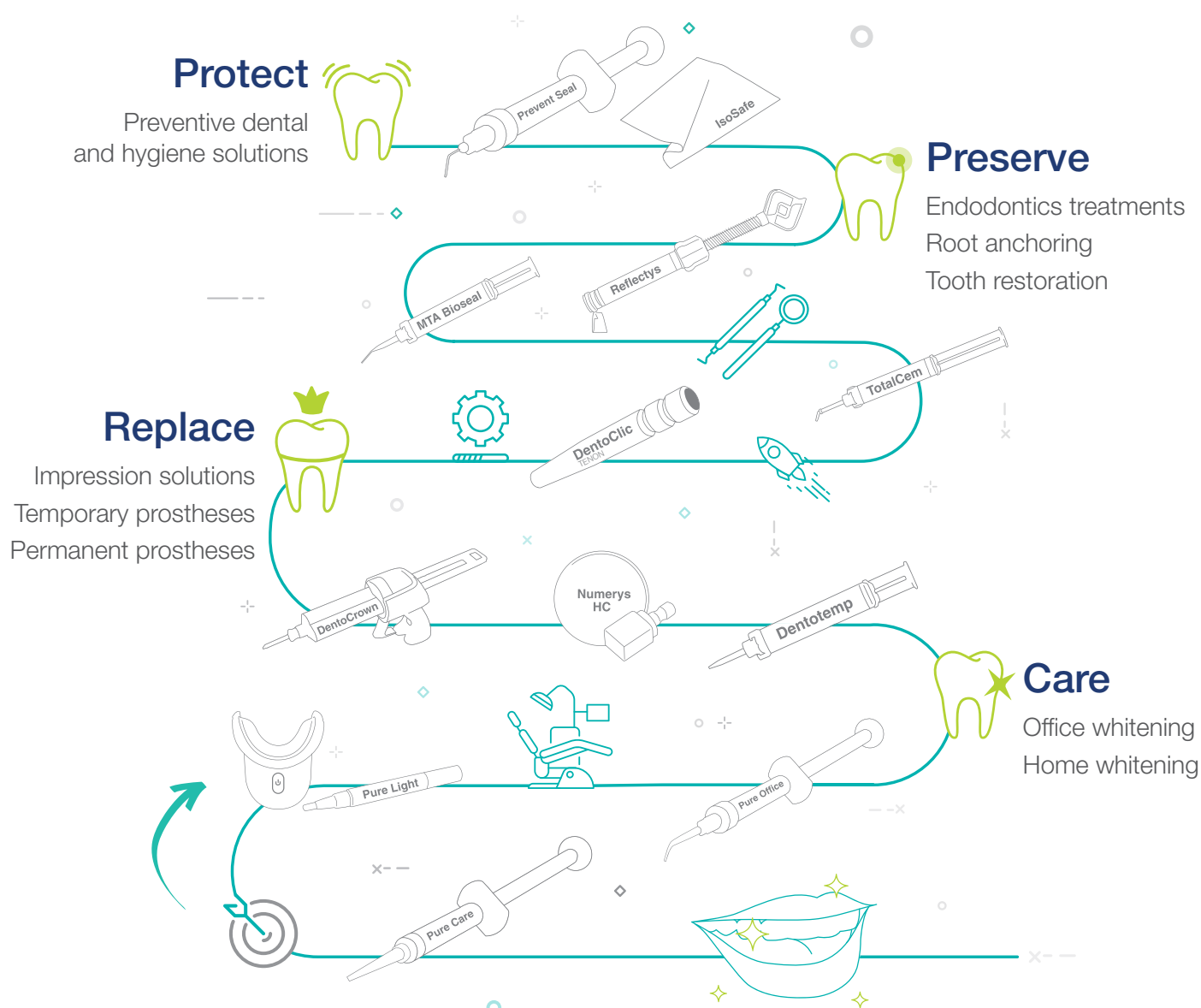


ALEXANDRE MULHAUSER
Itena Clinical CEO



Our motto, from Protection to Care

Our goal: to support you in providing the least invasive dentistry with the utmost care in the preservation of the teeth.





Protect

Prevent Seal 6



IsoSafe 8



Prevent Seal¹

Self-etching light-cured pit
& fissure sealant



Key points

Self-etching

- > No etching or rinsing is required

Adhesion to enamel (20 - 25 MPa)

Contains fluorides

Light-curing to 4.5 mm

Application with extra-thin tips

- > For application of sealant without material loss

Penetration into grooves and fissures

Indications

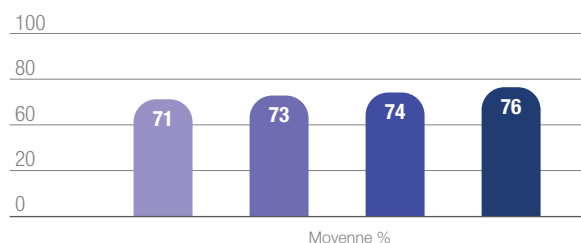
For the preventive sealing of pits and fissures, utilizing the self-etching technique.

Sealing with Prevent Seal gives protection to the susceptible tooth surface by protecting them with impenetrable resin layer, which prevents the penetration of bacteria.

Comparative study of the sealing of 4 different materials for sealing shafts and cracks.

Clin Pro Helioseal Embrace Prevent Seal

> Mean rate of fissure penetration of Prevent Seal vs competition*



> Penetration score of coloring in a fissure cemented with Prevent Seal vs competition*



Score 0. No penetration of the coloring

Score 1. Penetration limited to the exterior half of the cemented fissure

Score 2. Penetration reaching into the inside half of the cemented fissure

Score 3. Penetration of coloring into the fissure itself

TIPS AND TRICKS

- > Use air abrasion then rinse the tooth carefully before applying the sealant. No aluminum particles should remain, as they reduce the adhesion of **Prevent Seal**.
- > The prepared surface must be well dried before application of **Prevent Seal**, which is hydrophobic.
- > The **Prevent Seal** is a composite resin, and is compatible with all composites on the market.
- > Contains the camphorquinone photoinitiator. Use a lightcuring lamp which emits between 400 and 500 nm.



Prevent Seal

1.4 g syringe + 10x 25G needle tips

PVSEAL

Refills

20x 25G needle tips

PVSE-25G

Clinical case

Case study by Dr Shalom Melher



Initial view.



1 Clean with a small brush under a stream of water.



2 Dry with care.



3 Apply **Prevent Seal**.



4 Allow to act for 15 seconds.



5 Light-curing for 20 seconds.



6 Check the occlusion.



Final view.

IsoSafe²

Dental dams



IsoSafe latex dental dam

Size 6" x 6" (15,2 x 15,2 cm)
Medium thickness (0,28 mm)



IsoSafe non-latex dental dam

Size 6" x 6" (15,2 x 15,2 cm)
Medium thickness (0,25 mm)

Key points

Hypersensitivity reduction

- > Powder concentration less than 2 mg
- > Non-latex IsoSafe: made of polyisoprene

Tear and tensile resistance

- > High elongation over 700%
- > Uniform thickness:
 - 0.28 mm IsoSafe latex
 - 0.25 mm IsoSafe non-latex
- > Tensile resistance:
 - ≥ 24 MPa IsoSafe latex
 - ≥ 20 MPa IsoSafe non-latex

Color contrast

- > Tooth visibility within the dental arch

Indication

Pre-cut latex and non-latex dental dams used as isolation barriers during endodontic procedures.

IsoSafe

IsoSafe latex dental dam
Box of 36 sheets

ISDALA6X6BL-36

IsoSafe non-latex dental dam
Box of 15 sheets

ISDANL6X6PU-15





Preserve

Endodontics

MTA Biorep 12



MTA Bioseal 13



Radicular Anchorage

Dentoclic 14



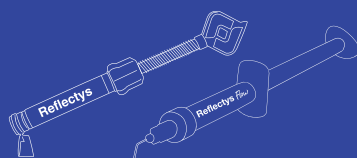
Dentocore
Dentocore Body 20



Composites Restoration

Reflectys

Reflectys Flow 22



Polish HD 25

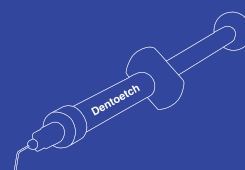


Adhesive systems Restoration

Iperbond Max 26



Dentoetch 27



MTA Biorep³

Bioceramic repair cement

Key points

Effective tissue regeneration and remineralization*

- > High release of calcium hydroxide ions (Ca^{2+}), due to MTA composition

Practical handling & insertion into the dental cavity

- > High cement plasticity, thanks to fine hydrophilic mineral oxide particles

One-session treatment

- > Setting time 15 min

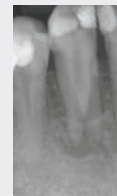
Dentist's preference

- > Choice of cement consistency, with 2 mixing modes (manual and automatic)
- > Economical single-dose packaging

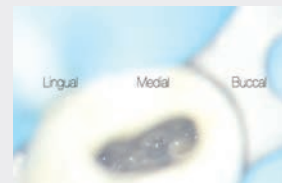


Clinical case

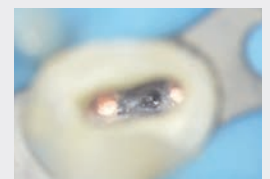
Case study by Dr Massimo Giovarruscio



Lower canine with two roots and more than one root canal. Irreversible pulpitis diagnosed, requiring root canal treatment (periapical inflammation).



2 Surgical microscope: additional short median canal between buccal and lingual roots.



3 Obturation of buccal and lingual canals by warm vertical compaction with MTA Bioseal obturation cement and gutta-percha.

Indications

- Treatment of root canal and furcation perforations, caused by carious or iatrogenic lesions
- Treatment of root perforations, caused by internal resorption
- Pulp capping
- Pulpotomy
- Apexogenesis
- Apexification
- Periapical surgery with reverse filling

MTA Biorep

2-patient Kit

2 capsules of MTA powder + 2 flasks of setting activator

MTA-BRP2.2

5-patient Kit

5 capsules of MTA powder + 5 flasks of setting activator

MTA-BRP5.5

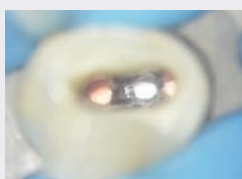
*Gandolfi, MG. (2014). Ion release, porosity, solubility, and bioactivity of MTA Plus tricalcium silicate. J Endod, 40(10), pp.1632-7. <https://pubmed.ncbi.nlm.nih.gov/25260736/>

MTA Bioseal³

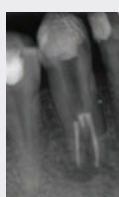
Bioceramic root canal obturation cement



1 Additional short medial canal (CBCT scan), suggesting the use of a calcium silicate hydraulic material (MTA), which is easier to apply in this complex anatomy.



4 Median canal obturation with MTA Bioseal.



Post-obturation X-ray.

Key points

Effective tissue regeneration and remineralization*

- > High release of calcium hydroxide ions (Ca^{2+}), due to MTA composition

Filling of all canals, including lateral ones

- > Thanks to a flow-enhancing MTA/resin mix and an adapted tip**

No tooth discoloration

- > Calcium tungstate formulation

MTA Bioseal

Kit

4g Syringe of MTA cement + 10 mixing tips
+ 1 mixing block

MTA-BSEAL

Indication

For the permanent sealing of root canals and may be used in combination with root canal filling materials.

* Torabinejad, M. (1995). Investigation of mineral trioxide aggregate for root-end filling in dogs. J Endod, 21(12), pp. 603-8.
<https://pubmed.ncbi.nlm.nih.gov/8596081/>

** Tanomaru-Filho, M. (2013). Radiopacity and flow of different endodontic sealers. Acta odontol latinoam, 26(2), pp. 1852-4834.
http://www.scielo.org.ar/scielo.php?script=sci_arttext&pid=S1852-48342013000200010

Dentoclic stainless steel¹ posts cylindrical-conical

Corono-radicular reconstruction

Key points

Durable, qualitative mechanical stress management

- > Post shape (2/3 cylindrical & 1/3 conical) adapted to the anatomical shape of the canal
- > 8-shaped head "double-clip effect" with a deep notch to lock the post in its seat and allow repositioning

Convenient to use

- > Color code according to diameters, drills/posts colorimetric correspondence

Wide range of diameters & lengths (30 refs)

- > Adapted to clinical cases (narrow, medium and wide root canals)



Indications

- **Stainless steel posts:** Temporary or permanent prosthetic reconstruction (direct or indirect method) following root canal treatment.
- **Calcinable posts:** Allow the prosthetist to make a post and core.

Refills of cylindrical-conical posts

Stainless steel posts	x20
9,6 mm ø 1,2 mm ○	DIA20-095
11,5 mm ø 1,2 mm ○ L	DIAL20-114
9,6 mm ø 1,3 mm ●	DIJ20-095
11,5 mm ø 1,3 mm ● L	DIJL20-114
11,6 mm ø 1,4 mm ●	DIR20-115
13,5 mm ø 1,4 mm ● L	DIRL20-134
13,6 mm ø 1,5 mm ●	DIB20-135
15,6 mm ø 1,6 mm ●	DIV20-155
17,6 mm ø 1,7 mm ●	DIN20-175

Refills of conical posts

Calcinable posts	x40	x100
9,5 mm ø 1,15 mm ○	DCAA40-095	-
11,4 mm ø 1,15 mm ○ L	DCAAL40-114	-
9,5 mm ø 1,25 mm ●	DCAJ40-095	DCAJ100095
11,4 mm ø 1,25 mm ● L	DCAJL40-114	-
11,5 mm ø 1,35 mm ●	DCAR40-115	DCAR100115
13,4 mm ø 1,35 mm ● L	DCARL40-134	-
13,5 mm ø 1,45 mm ●	DCAB40-135	DCAB10135
15,5 mm ø 1,55 mm ●	DCAV40-155	DCAV100155
17,5 mm ø 1,65 mm ●	DCAN40-175	DCAN100175

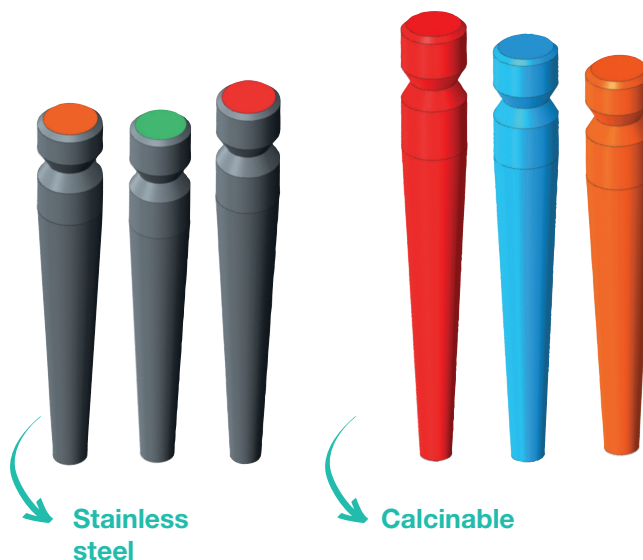
& calcinable⁴ & conical

Refills of conical posts

Stainless steel posts	x20
9,25 mm ø 1,52 mm	CIJ20-09
11,25 mm ø 1,72 mm	CIO20-11
12,25 mm ø 1,80 mm	CIV20-12
13,25 mm ø 1,82 mm	CIR20-13
14,25 mm ø 2,02 mm	CIB20-14
16,25 mm ø 2,22 mm	CIV20-16

Refills of conical posts

Calcinable posts	x40	x100
9,20 mm ø 1,5 mm	CCAJ40-09	CCAJ100-09
11,20 mm ø 1,7 mm	CCAO40-11	CCAO100-11
12,20 mm ø 1,78 mm	CCAV40-12	CCAV100-12
13,20 mm ø 1,8 mm	CCAR40-13	CCAR100-13
14,15 mm ø 2 mm	CCAB40-14	CCAB100-14
16,15 mm ø 2,2 mm	CCAV40-16	CCAV100-16



Dentoclic Pins

Indications

- **Steel pins:** Temporary or permanent prosthetic reconstruction (direct or indirect method) following root canal treatment.
- **Calcinable pins:** Allow the prosthetist to make a post and core.

Conical refill

- Refills of 10 stainless steel conical pins¹ **CCLA10**
23,25 mm, ø 1,8 mm
- Refills of 20 calcinable conical pins⁴ **CCLACA20**
23 mm, ø 1,75 mm



Cylindrical-conical refills

Refills of 10 cylindrical-conical stainless steel pins ¹	Refills of 20 cylindrical-conical calcinable pins ⁴
22 mm ø 1,2 mm ○ DCLAIA-10	22 mm ø 1,15 mm ○ DCLACA-20
22 mm ø 1,3 mm ● DCLAIJ-10	22 mm ø 1,25 mm ● DCLACJ-20
22 mm ø 1,4 mm ● DCLAIR-10	22 mm ø 1,35 mm ● DCLACR-20
22 mm ø 1,5 mm ● DCLAIB-10	22 mm ø 1,45 mm ● DCLACB-20
22 mm ø 1,6 mm ● DCLAIV-10	22 mm ø 1,55 mm ● DCLACV-20
22 mm ø 1,7 mm ● DCLAIN-10	22 mm ø 1,65 mm ● DCLACN-20

Dentoclic Sandblasted titanium posts¹

Key points

Durable, qualitative mechanical stress management

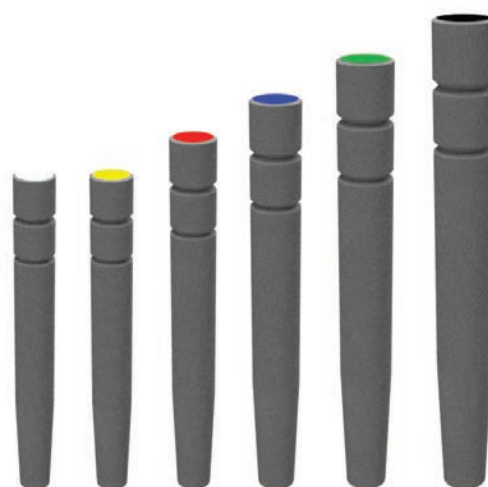
- > Roughness due to sandblasted titanium (7 - 10 µm))

Convenient to use

- > Color code according to diameters, drills/ posts colorimetric correspondence

Wide range of diameters & lengths (9 refs) :

- > Adapted to clinical cases (narrow, medium and wide root canals)



Indication

Temporary or permanent prosthetic reconstruction (direct or indirect method) following root canal treatment.

Refills of 20 sandblasted posts

9,6 mm ø 1,2 mm ○	TIA20-0
11,5 mm ø 1,2 mm ○ L	TIAL20-00
9,6 mm ø 1,3 mm ●	TIJ20-1
11,5 mm ø 1,3 mm ● L	TIJL20-01
11,6 mm ø 1,4 mm ●	TIR20-2
13,5 mm ø 1,4 mm ● L	TIRL20-02
13,6 mm ø 1,5 mm ●	TIB20-3
15,6 mm ø 1,6 mm ●	TIV20-4
17,6 mm ø 1,7 mm ●	TIN20-5

TITANIUM kit of 78 sanblasted posts

- 6 post + 6 long posts
- 15 post + 10 long posts
- 15 post + 10 long posts
- 7 post
- 3 post
- 3 post
- ● ● ● ● ● 6 cylindrical-conical drills
- 1 pilot drill ø 0,95 mm

KTI-75

Dentoclic Fiberglass posts¹

Key points

Reproduction of mechanical constraints of dentin

- > Optimum ratio fiber (80%)/matrix (20%) provides compressive strength fracture resistance*
- > High concentration glassfibers in the longitudinal direction provides the post resistance and elasticity

Low extraction resistance and no delamination

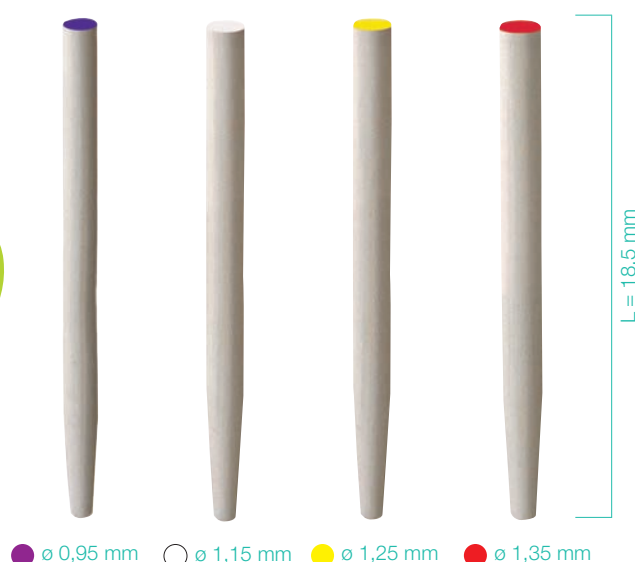
- > Longitudinal glass fibers

Natural aesthetic appearance of the final restoration

- > Translucent or ivory posts

Convenience of use

- > Color code according to diameters, drills/posts colorimetric correspondence



Indication

Prosthetic reconstruction of a tooth following root treatment.

TIPS AND TRICKS

To increase chemical bonding at the glassfiber/adhesive interface, apply silane to the surface of the post and dry it thoroughly before applying the adhesive.



How to apply a fiberglass post?

- > Remove the composite to individualize the post.
- > Drill a pilot hole in the fiberglass post to facilitate to access it more easily
- > Use either a waterless sonic or ultra-sonic diamond insert or a specific drill (Gates type) to delaminate the fiber in order to find the root canal under the reconstruction

Refills of 5 fiberglass posts

	Translucent	Ivory
●	FVTV5-1	FVOV5-1
○	FVTA5-1.2	FVOA5-1.2
●	FVTJ5-1.3	FVOJ5-1.3
●	FVTR5-1.4	FVOR5-1.4

TITANIUM kit of 25 fiberglass posts

	Translucent	Ivory
● x 6		
○ x 6		
● x 4		
● x 4		
1 pilot drill ø 0,95 mm	KFVT20	KFVO20
● ○ ● ● 4 cylindrical-conical drills		

*Internal report, Itena Clinical, "Dentoclic, Glass fibre posts for corono-radicular reconstruction".

Dentoclic Drills¹

Indications

Designed to prepare the space for the posts and keys:

- **Pilot drills** help widen the canal
- **Cylindrical-conical , conical or performance drills** prepare the holding for the root post according to the practitioner's choice

Gate or largo drills widen and straighten the coronal third of the canals in order to provide improved access for instruments used to work on the canals. Their use is limited to the right section of the canals.

Pilot drills



Set of 4 pilot drills

ø 0,75 - 1 groove	FP-075
ø 0,90 - 2 grooves	FP-090
ø 0,95 - 3 grooves	FP-095
ø 1,05 - 4 grooves	FP-105
4 Pilote drills assortment	FPAASSORT

Cylindrical-conical drills



Set of 4 cylindrical-conical

ø 1 mm	DFV4-010
ø 1,2 mm	DFA4-012
ø 1,3 mm	DFJ4-095
ø 1,4 mm	DFR4-115
ø 1,5 mm	DFB4-135
ø 1,6 mm	DFV4-155
ø 1,7 mm	DFN4-175

Conical drills

Used with yellow, orange and red conical drills



Used with green, blue and purple conical tenons

Set of 4 conical drills

N°1	CF4-01
N°2	CF4-02
4 Conical drills mixt N°1 x 2 + N°2 x 2	CF4-MIX

Performance drills



Set of 3 Performance drills

ø 1,2 mm	FPFA-1.2
ø 1,3 mm	FPFJ-1.3
ø 1,4 mm	FPFR-1.4
ø 1,5 mm	FPFB-1.5
ø 1,6 mm	FPFV-1.6
ø 1,7 mm	FPFN-1.7

Gate drills



Set of 6 Gate drills

	28 mm	32 mm
ø 0,50 - 1 groove	FG1-28	FG1-32
ø 0,70 - 2 grooves	FG2-28	FG2-32
ø 0,90 - 3 grooves	FG3-28	FG3-32
ø 1,10 - 4 grooves	FG4-28	FG4-32
ø 1,30 - 5 grooves	FG5-28	FG5-32
ø 1,50 - 6 grooves	FG6-28	FG6-32
ø Assorted	FGASSORT-28	FGASSORT-32

Largo drills



Set of 6 Largo drills

	28 mm	32 mm
ø 0,70 - 1 groove	FL1-28	FL1-32
ø 0,90 - 2 grooves	FL2-28	FL2-32
ø 1,10 - 3 grooves	FL3-28	FL3-32
ø 1,30 - 4 grooves	FL4-28	FL4-32
ø 1,50 - 5 grooves	FL5-28	FL5-32
ø 1,70 - 6 grooves	FL6-28	FL6-32
ø Assorted	FLASSORT-28	FLASSORT-32

Kits

PREMIUM kit

100 stainless steel & 100 long cylindrical-conical posts

- 10 stainless steel + 10 calcinable
- 20 stainless steel + 20 calcinable
- 20 longs stainless steel + 20 long calcinable
- 20 stainless steel + 20 calcinable
- 15 longs inox + 15 long calcinable
- 15 stainless steel + 15 calcinable
- 1 pilot drill ø 0,95 mm
- ● ● L ● ● L ● 6 cylindrical-conical drills

KPREMIUM

EXCELLENCE kit

125 stainless steel & 125 calcinable cylindrical-conical posts

- 10 stainless steel + 10 calcinable
- 40 stainless steel + 40 calcinable
- 40 stainless steel + 40 calcinable
- 25 stainless steel + 25 calcinable
- 8 stainless steel + 8 calcinable
- 2 stainless steel + 2 calcinable
- 1 pilot drill ø 0,95 mm
- ● ● ● ● ● 6 cylindrical-conical drills

KEXCEL

CONICAL kit

125 stainless steel & 125 calcinable conical posts

- 40 stainless steel + 40 calcinable
- 40 stainless steel + 40 calcinable
- 25 stainless steel + 25 calcinable
- 10 stainless steel + 10 calcinable
- 8 stainless steel + 8 calcinable
- 2 stainless steel + 2 calcinable
- 1 pilot drill ø 0,90 mm
- 2 conical drills n°1 + ● 2 forets coniques n°2

KC-250

PERFORMANCE kit

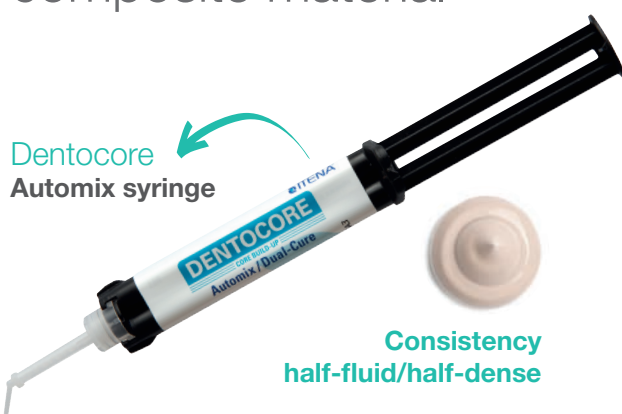
stainless steel posts & drills Performance

- 10 stainless steel + 10 calcinable
- 40 stainless steel + 40 calcinable
- 40 stainless steel + 40 calcinable
- 25 stainless steel + 25 calcinable
- 8 stainless steel + 8 calcinable
- 2 stainless steel + 2 calcinable
- 1 pilot drill ø 0,75 mm
- ● ● ● ● ● 6 cylindrical-conical drills

KPERF-250

Dentocore & Dentocore Body¹

Core build-up and post cementation composite material



Key points

Solid support for final reconstruction

- > High degree of polymerisation - PHB technology (Hyperbranched Multi-Methacrylate Polymers) and nanoparticles
- > Limited shrinkage

Convenient to use

- > Consistent, homogeneous mix for controlled application and distribution
- > Dual cure

Two different viscosities to suit different applications

- > **Dentocore:** has a light viscosity that enables it to flow into fissures and narrow spaces. Can be used for endodontics
- > **Dentocore Body:** stays in place even in the case of complex maxillary abutments. Spreads evenly under pressure
- > Time saving: same product used to seal and restore the core



Indication

A dual-cure, fluoride releasing, resin composite material designed for the fabrication of core build-ups.

Technical data*

> Shrinkage rate	1.2 %
> Working time	1 min 30 - 3 min 30
> Auto setting time	2 min 30 - 4 min 30



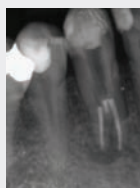
*Internal report, Itena Clinical, "Dentocore -Core Build-Up".

Clinical case

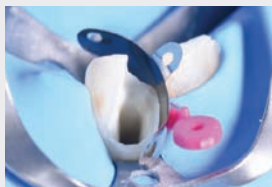
Example of a clinical case by Dr Massimo Giovarruscio



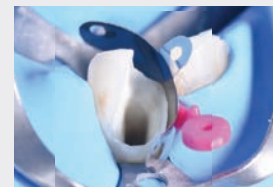
Lower canine with two roots. Irreversible pulpitis diagnosed, requiring root canal treatment (periapical inflammation).



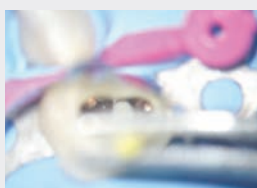
Root canal treatment and obturation with **MTA Biorep** repair cement and **MTA Bioseal** obturation cement.



1 After root canal treatment, a matrix is fitted for restoration.



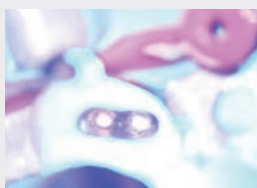
2 Cleaning and preparation of access cavity.



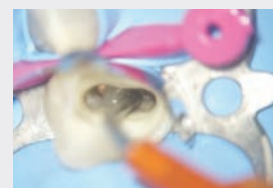
3 Testing the **Dentoclic** fiberglass post.



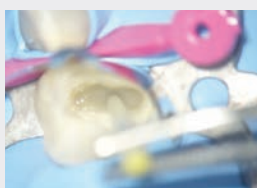
4 Preparation of the **Dentoclic** fiberglass post, using **Silan-It** silane and **Quickbond** adhesive.



5 Application of **Quickbond** adhesive in the canal, followed by light-curing for 40 seconds.



6 Injection of **DentoCore** material into the canal.



7 Application of **DentoCore** onto the post, then insertion of the post into the canal.



BEFORE



AFTER

Tooth treatment in a single visit:

- Root canal treatment and obturation (**MTA Biorep** and **MTA Bioseal**).
- Corono-radicular reconstruction (**Dentocore** and **Dentoclic**).
- Then restoration with **Reflectys** universal composite.

Final result: Complete treatment, from canals to aesthetic restoration.

Dentocore

Dentocore white cartridge 1 cartridge 50 g + 25 mixing tips + 25 intraoral tips	DCB-50
Dentocore A3 Cartridge 1 cartridge 50 g + 25 mixing tips + 25 intraoral tips	DCA3-50
Dentocore A3 Automix 1 syringe Automix 9 g + 10 mixing tips + 10 thin intraoral tips + 10 extra-thin intraoral tips	DCSAK1

Dentocore Body

Dentocore Body A3 Cartridge 1 cartridge 50 g + 25 mixing tips+ 25 intraoral tips	DCBODY-50
Dentocore Body A3 Automix 1 syringe Automix 9 g + 10 mixing tips + 10 thin intraoral tips + 10 extra-thin intraoral tips	DABODY1-10
Dentocore Body A3 Automix - Value Pack 3 syringes Automix 9 g + 30 mixing tips	DABODY3-VP

Refills of mixing tips

Syringe

Reill of 20 mixing tips	DTEM-20
Refill of 25 mixing tips+ 25 thin intraoral tips (Length 100 mm Ø 1.1 mm)	DCE-50
Refill of 25 mixing tips + 25 extra-thin intraoral tips (Length 135 mm Ø 0.09 mm)	DCEXXF-50

Cartridge

25 Blue mixing tips	186213
25 yellow intraoral tips	186214

Dispensing Gun

Dispensing Gun fot 1:1 / 2:1 25 ml cartridge	185761
--	--------

Reflectys & Reflectys Flow¹

Universal composite for anterior and posterior restorations



Key points

Natural aesthetic finish

- > Color stability over time, due to low discoloration rate*
- > Mimics the translucency and brilliance of natural teeth thanks to nanofillers**
- > Wide range of shades (17) and translucency levels (4)

Deep & homogeneous curing

- > Curing depth of 2.95 mm for Reflectys and 2.50 mm for Reflectys Flow

Easy handling

- > High filler concentration (80%) facilitates shaping and polishing and prevents sticking to instruments***
- > Secure closure and composite preservation, through the cap glued to the syringe
- > Fine tip for Reflectys Flow

Indications

Reflectys

- Class I, II, V of posterior teeth.
- Class III, IV, V of anterior teeth and cervical cavities (wedge shaped defect) involving root surfaces.

Reflectys Flow

- Class V restorations (cervical caries, root erosion, wedge shaped defects)
- Anterior restorations (Class III, IV)
- Small posterior restorations
- Extended fissures sealing in molars and premolars
- Repair of composite/ceramic veneers
- Blocking out of undercuts

* Raeisiosadat, F. (2017). Staining Microhybrid Composite Resins With Tea and Coffee. Avicenna J Dent Res, 9(1).

https://www.researchgate.net/publication/319905032_Staining_Microhybrid_Composite_Resins_With_Tea_and_Coffee

** Mikhail, SS. (2013). Optical characteristics of contemporary dental composite resin materials. J Dent. 41(9), pp. 771-8.

<https://pubmed.ncbi.nlm.nih.gov/23851132/><https://pubmed.ncbi.nlm.nih.gov/27546859/>

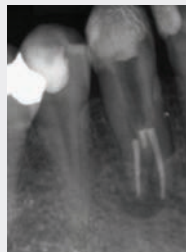
*** Vreven, J. (2005). Résines composites. EMC Odontologie. <https://www.em-consulte.com/article/38204/resines-composites>

Clinical case

Clinical case by Dr Massimo Giovarruscio



Lower canine with two roots. Irreversible pulpitis diagnosed, requiring root canal treatment (periapical inflammation).

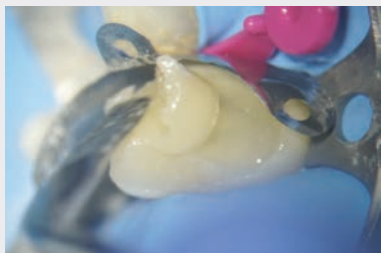


Root canal treatment and obturation using **MTA Biorep** repair cement and **MTA Bioseal** obturation cement.



1 Corono-radicular reconstruction using a **Dentoclic** fiberglass post and **Dentocore** material.

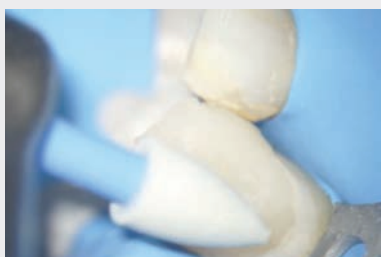
Reflectys composite was then used to restore the tooth in successive stages.



2 Application of **Quickbond** adhesive.



3 Placement of **Reflectys** composite (A3 shade then enamel).



4 Tooth polishing with **Polish HD** polishers.



BEFORE



AFTER

Tooth treatment in a single visit:

- Root canal treatment and obturation (**MTA Biorep** and **MTA Bioseal**).
- Corono-radicular reconstruction (**Dentocore** and **Dentoclic**).
- Then restoration with **Reflectys** universal composite.

Reflectys		
Shades	4 g Syringe + 1 spatula	20 compules of 0,25 g
Bleach	SRTYS-BLC	CPTYS-BLC
A1	SRTYS-A1	CPTYS-A1
A2	SRTYS-A2	CPTYS-A2
A3	SRTYS-A3	CPTYS-A3
A3.5	SRTYS-A3.5	CPTYS-A3.5
A4	SRTYS-A4	CPTYS-A4
B1	SRTYS-B1	CPTYS-B1
B2	SRTYS-B2	CPTYS-B2
B3	SRTYS-B3	CPTYS-B3
C2	SRTYS-C2	CPTYS-C2
C3	SRTYS-C3	CPTYS-C3
D3	SRTYS-D3	CPTYS-D3
Enamel	SRTYS-E	CPTYS-E
Incisal	SRTYS-I	CPTYS-I
Pedo	SRTYS-P	CPTYS-P
Opaque A2	SRTYS-A20	CPTYS-A20
Opaque A3	SRTYS-A30	CPTYS-A30

Reflectys Flow		
Shades	1x 2 g syringe + 10 tips ø 0.9 mm	
A1	FWTYS-A1	
A2	FWTYS-A2	
A3	FWTYS-A3	
A3.5	FWTYS-A3.5	
B2	FWTYS-B2	
B3	FWTYS-B3	

Reflectys - Restoration kit

For all your routine restorations

4 syringes REFLECTYS (A2, A3, A3.5, B2)
+ 1 adhesive Iperbond max

KTYS-4.1B



Reflectys - Stratification kit

For the most delicate aesthetic cases

7 Reflectys syringes (A1, A2, A3, Opaque A2,
Opaque A3, Enamel, Incisal) + 1 Iperbond Max adhesive +
4 syringes of Dentoetch etching gel

KTYS-7.2BE



Polish HD⁵

Composite polishers

Key points

Convenience of use

- > **Twist:** polishes all surfaces with a single instrument. Medium-grit polishers (pre-polishing) and fine-grit polishers (polishing)
- > **Brush:** polishes the occlusal surfaces, including pits and fissures. Medium-grit polishers (pre-polishing) and fine-grit polishers (polishing)

Time-saving

- > 2 steps (instead of 4)
- > Use without polishing paste

Natural aesthetic finish

Reduced risk of microbial contamination

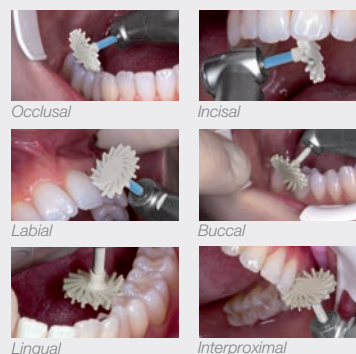
- > Single use instrument



Simplified protocol



Twist
Anterior restorations











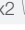
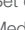


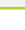






Brush
Posterior restorations



Indications

Reduction or surface conditioning of dental tissues such as dental enamel and dental materials such as composites, metal alloys, ceramics and dental resins.

Polish HD

	Set de 12 Flame polishers	PLFLAM-12
	Set de 12 Cup polishers	PLCUP-12
	Set de 12 Lens polishers	PLLENS-12
	Set de 12 Brush polishers (medium-grit)	PLBRUSH-12
	Set de 12 Brush polishers (fine-grit)	PLBRUSHF-12
	Set de 12 Twist polishers (medium-grit)	PLTWM-12
	Set de 12 Twist polishers (fine-grit)	PLTWF-12
	Set de 6 assorted polishers (medium-grit) (x2  , x2  , x2 )	PLASSORT-6
	Set de 12 assorted polishers Medium-grit (x3  , x3 ) + Fine-grit (x3  , x3 )	PLTATO-12
	Set de 20 assorted polishers (medium-grit) (x5  , x5  , x5 , x5 , x5)	PLASSORT-20

Also available



Cup
Lingual and palatal surfaces of anterior restorations, posterior cusps, proximal lines and angles.



Flame
Fissures, occlusal reliefs and cervical area.



Lens
Vestibular surface of incisors, composite surfaces, incisal angles and interproximal areas.

Iperbond Max¹

Universal adhesive
(8th generation)

Can be used with
self-etching
& selective etching



Key points

Stronger and longer-lasting bonding

- > 2 monomers 4-META and 10-MDP
- > Stability over time measured by marginal adaptation (dentin: 95% to 97%, quality 1 enamel: 99% to 100%, quality 1)*

Time-saving

- > 3-in-1 product (primer, adhesive and etching)**

Practical use

- > 1 single bottle,
1 single application step

Patient comfort

- > Soft etching (2> pH> 2.5)

Clinical case

Using Iperbond Max in etch and rinse mode (direct restoration).



Initial view.



- 1** Etching of enamel with **Dentoetch**. Application time: 30 seconds.



- 2** Rinsing and drying in dry air.



- 3** Application of **Iperbond Max** adhesive to the entire tooth wall. Application time: 20 seconds.



- 4** Drying of adhesive in dry air.



- 5** Curing.

Indications

- Direct light-cured composite restorations onto natural teeth.
- Indirect restorations made from composite, ceramic and metal (inlays, onlays, veneers, crowns) with light-cured and dual-cured luting composites.
- Repairs to fractured restorations.

Iperbond Max

5 ml bottle

IBONDMAX5

* Neppelenbroek, KH. (2015). The clinical challenge of achieving marginal adaptation in direct and indirect restorations. J Appl Oral Sci, 23(5), 448-9.
<https://www.ncbi.nlm.nih.gov/pmc/articles/PMC4621935/>

** Carrilho, E. (2019). 10-MDP Based Dental Adhesives: Adhesive Interface Characterization and Adhesive Stability-A Systematic Review. Materials (Basel), 12(5), pp.790.
<https://pubmed.ncbi.nlm.nih.gov/30866488/>

Dentoetch¹

Etching gel
(phosphoric acid 37%)

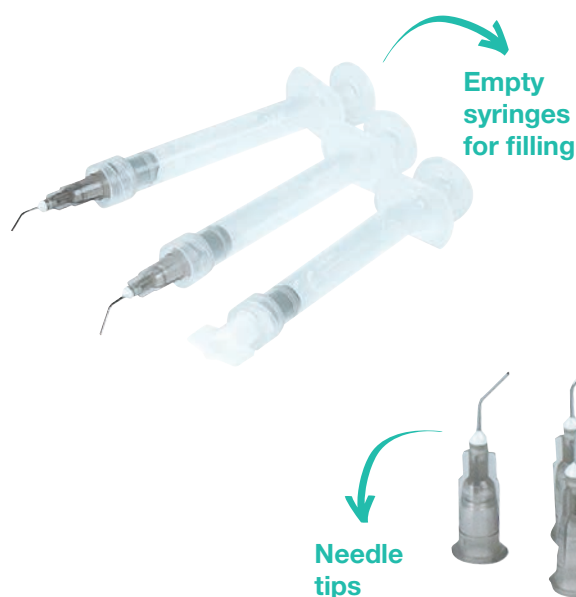


1.5g syringe

90g syringe

Key points

- Blue color to differentiate the product
- Viscosity allows product to stay in place
- Soluble in water
- Rinsing convenience
- Economical format with refill syringes



Empty
syringes
for filling

Needle
tips

Indication

Etching tooth enamel and dentin when preparing surfaces for the application of composites.

Dentoetch	
4x 1.5 g syringes + 8 needle tips	DE-4.12
1x 90 g syringe + 5x 1.5 g empty syringes + 20 needle tips	DETC-VP
20 needle tips 22 G	DEA-20



Replace

Impression solutions

Traxodent 30



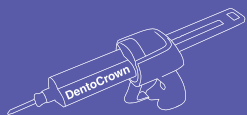
Hydrospeed HD 31



Temporary prostheses

Dentocrown HD 32 Dentotemp 34

Provitemp 36



Permanent prostheses

Numerys GF 38

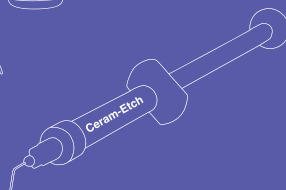
Totalcem 40

Ceram-Etch 42

Numerys HC 39

Total C-ram 41

Silan-It 42



Traxodent⁶

Hemostatic gingival retraction paste

Ergonomic 0.7 g syringe
(average of 5 applications)



Airtight resealable aluminum pouch

The paste does not dry out, and can be stored

Key points

Rapid, effective retraction in 2 min

- > Compression to stop bleeding while absorbing gingival fluids

Convenience of application, rinsing and disposal

Hemostasis

- > Spreading tissue in contact with air via chemo-mechanical expansion

Maneuverable, adjustable tips

Indication

Specifically formulated to provide chemo-mechanical gingival retraction and hemostasis. It is intended for use prior to taking an impression, cementation, cavity preparation or whenever hemostasis and retraction is required.

Traxodent Packs

2x 0,7 g syringes + 6 needle tips	TRASTRT-2
7x 0,7 g syringes + 15 needle tips	TRABOI-7
25x 0,7 g syringes + 50 needle tips	TRAPACK-25

Traxodent - Tips refills

20 needle tips 16 g	TRAEMB-20
60 needle tips 16 g	TRAEMB-60

Hydrospeed HD⁴

Addition-crosslinking silicone-based
high precision impression material (VPS*)

Indication

All type of impression where accuracy is needed : crowns, bridges, inlays, onlays, veneers, splints, orthodontic impressions, antagonists.



Hydrospeed Light (wash material)	Distribution system	Viscosity	Riser type	Max application time (23°C)	Setting time (37°C)	Ref.
● Hydrospeed HD Light Body	Cartridge for mixing gun	Light	Normal	02:15	02:30	HYD-BL
● Hydrospeed HD Light Body Quick	Cartridge for mixing gun	Light	Quick	01:15	01:45	HYD-BLQ
● Hydrospeed HD Regular Body	Cartridge for mixing gun	Regular	Normal	02:15	02:30	HYD-BR

Hydrospeed Putty (Tray material)	Distribution system	Viscosity	Riser type	Max application time (23°C)	Setting time (37°C)	Ref.
● Hydrospeed HD Putty Soft	Pots for manual mixing	Soft	Normal	02:00	02:30	HYD-PS
● Hydrospeed HD Putty Soft Quick	Pots for manual mixing	Soft	Quick	01:15	01:45	HYD-PSQ
● Hydrospeed HD Putty Hard	Pots for manual mixing	Hard	Normal	02:00	02:30	HYD-PH
● Hydrospeed HD Putty Hard Quick	Pots for manual mixing	Hard	Quick	01:15	01:45	HYD-PHQ



Hydrospeed HD - Tips

A. Set of 100 tips + clamping ring	153247
A. Set of 25 intra-oral tips	186214
B. Set of 50 ECO mixing tips	153249
C. Set of 100 transparent intra-oral tips for special bite registration	153248
D. Set of 50 embouts ECO green mixing tips	153250

Hydrospeed HD Bite registration⁴

Bite registration

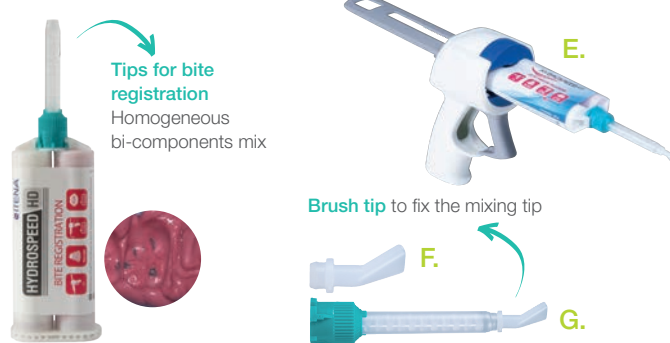
Key points

Does not create bubbles
Shore hardness 90 A
Setting time: 1 min 40 sec
Thixotropic / does not run
Both flexible and rigid

Hydrospeed HD Bite registration

2x 1:1 / 50 ml + 6 mixing tips
+ 6 intra-oral tips

HYD -REG



Indications

- Intra-oral bite registration
- Moulding of crowns, bridges, inlays and onlays
- Bite registration for orthodontic needs

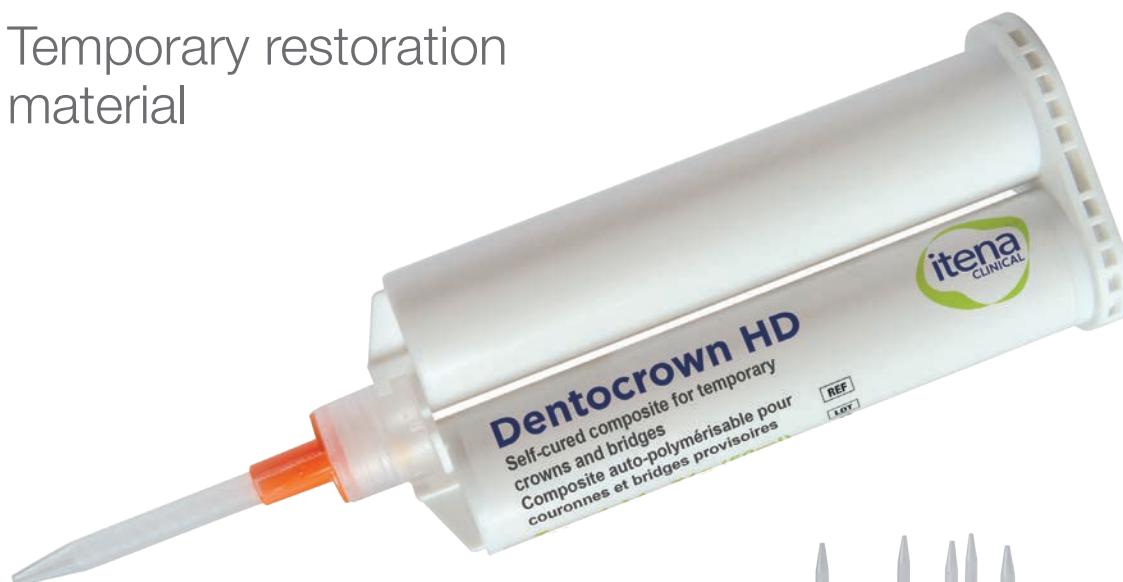
Accessories

E. 50 ml 1:1 / 2:1 mixing gun	153241
F. Set of 100 transparent intraoral tips for special bite registration	153248
G. Set of 50 ECO green mixing tips	153250

* Polyvinylsiloxane.

Dentocrown HD¹

Temporary restoration material



Mixing tips & Thin intra-oral tips

Key points

Setting time: 2 min 30

Material stability during chewing

Natural aesthetic appearance

Ergonomic gun



Mixing gun

Indication

Composite resin for making crowns, temporary bridges, inlays, onlays and veneers.

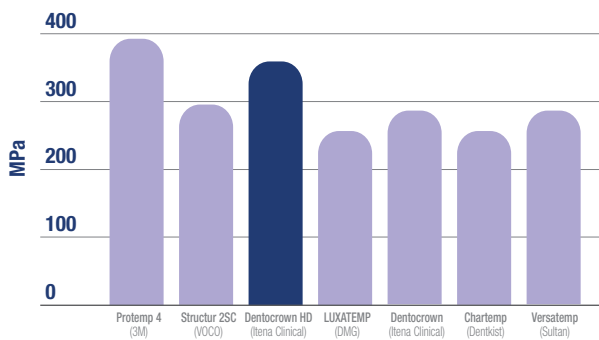
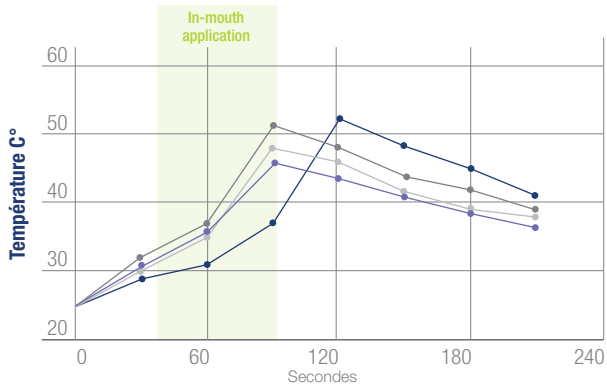


Technical data*

> High compressive resistance.....	330 MPa
> Flexural strength.....	70 MPa
> Preparation time.....	45 sec max
> Time in mouth.....	45 sec

*Internal report, Itena Clinical, "Dentocrown HD".

Acrytemp (Zhermack) Structur 2SC (Voco) Dentocrown (Itena Clinical) Dentocrown HD (Itena Clinical)



Source : Itena Clinical's internal test report.

TIPS AND TRICKS

The Dentocrown HD can be reworked

There are 2 methods available:

- Remove the viscous layer (inhibition layer) from the surface of the temporary tooth with modified alcohol. Rework.
- Use the temporary cement **Dentotemp** to fill in empty spaces.



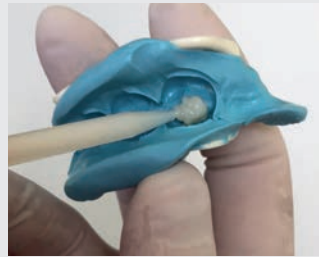
Dentocrown HD	
Cartridges	
A1 74 g + 10 mixing tips	DWNHD50-A1
A2 74 g + 10 mixing tips	DWNHD50-A2
A3 74 g + 10 mixing tips	DWNHD50-A3
Embouts mélangeurs	
Cartridge mixing tips	DWNE-10
Pistolet mélangeur	
50 ml 1:1 mixing gun	153241

Clinical case

Clinical case by Dr Bury Laurence



Initial view of tooth to be treated.



1 Fill impression with Dentocrown HD.



2 View of the impression.



3 View of temporary tooth.



Final result.

Dentotemp¹

Long-term temporary cement (over 6 months) and final temporary on the implant



Key points

Easy handling

- > Self-curing in 2 stages: gel for easy removal of excess and final set
- > Consistent, homogeneous mix for controlled application and distribution, thanks to the automix syringe and mixing tips

Single-block removal

- > For re-operation without damaging tissue or restoration, due to the thinness of the film (10µm)

Relining possible

Suitable for use on living teeth

- > Eugenol-free composition to avoid irritation and interference with the curing of resin-based definitive sealants



Indications

- **Temporary sealing** on natural, non-reconstituted teeth (composite, core).
- **Temporary sealing** for cosmetic elements such as veneers or onlays.
- **Permanent sealing** for crowns and bridges on implants with possibility of removing restorations.

Clinical case



Initial view.



1 Teflon placed prior to placement of crown to isolate the screw head.



2 Filling in of basal surface. Work time between 45 and 60 seconds.



3 Apply pressure to the temporary crown, holding it in place or having the patient bite gently on a cotton wad until initial setting for 2 min to 2 min 30 sec.



4 Remove the excess with a probe.



Final view.

Dentotemp

Dentotemp manual mix

2x 12 g syringes (base+catalyst) + 10 mixing spatulas
+ 1 mixing block

DT-2.10

Dentotemp Automix intro kit

1x 6 g syringe + 5 mixing tips

DTCA1-5

Dentotemp Automix

2x 6 g syringes + 20 mixing tips

DTCA2-20

Dentotemp Automix Value Pack

4x 6 g syringes + 40 mixing tips

DTCA4-VP

Tips

Refill with 20 mixing tips

DTEM-20

Refill with 25 mixing tips + 25 thin intraoral tips
(Length: 100 mm ø 1.1 mm)

DCE-50

Refill with 25 mixing tips + 25 extra-thin intraoral tips
(Length: 135 mm ø 0.09 mm)

DCEXXF-50

Provitemp¹

Short-term temporary cement
(up to 6 weeks)



Key points

Tight seal

- > Low solubility (7µg/mm³)

Easy handling

- > Self-curing in 2 stages: gel for easy removal of excess and final set
- > Consistent, homogeneous mix for controlled application and distribution, thanks to the automix syringe and mixing tips

Suitable for use on living teeth

- > Eugenol-free composition to avoid irritation and interference with the curing of resin-based definitive sealants

Indication

Temporary cementation of crowns, bridges, inlays, onlays and splints.

Provitemp

Provitemp Automix 1x 6 g syringe + 10 mixing tips	PTEMP1-10
---	-----------

Provitemp Automix 2x 6 g syringes + 20 mixing tips	PTEMP2-VP
--	-----------

Tips

Refill with 20 mixing tips	DTEM-20
----------------------------	---------

Refill with 25 mixing tips + 25 thin intraoral tips (Length: 100 mm ø 1.1 mm)	DCE-50
--	--------

Refill with 25 mixing tips + 25 extra-thin intraoral tips (Length: 135 mm ø 0.09 mm)	DCEXF-50
---	----------



PROTECT

PRESERVE

REPLACE

CARE

ACCESSORIES

Numerys GF¹

Fiberglass blocks and disks

1 block = 1 inlay-core



NUMERYS GF
Glass fiber disk



1 disk

= up to 45 inlay cores
DISK FORMAT DESIGNED
FOR LABORATORIES

Key points

Compliance with chewing constraints

- > Flexural strength and modulus of elasticity close to dentins' one

Inlay-core adapted to the anatomical shape of the root canal

Time-saving

- > No opacification required when prosthesis manufacturing

Indication

Preparation of anatomical and aesthetic glass fiber post-and-core prosthesis elements using CAD CAM technologies.

Technical data*

- > Flexural strength..... 990 MPa
- > Elastic modulus..... 23,8 Gpa



Numerys GF - 5 blocks.

H 18 mm, L 15 mm, W 16 mm)

NYSGF-BCS

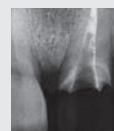
Numerys GF - 1 disk

Ø 98.5 mm - Height 20 mm)

NYSGF-DSK

Clinical case

Clinical case by Dr Gérard Duminil



1 X-ray of tooth 9 after placement of failing crown.



2 Item after machining.



3 Try-out on the model.



4 Adaptation checked via X-ray.



5 Etching of canal with phosphoric acid.



6 Item is silanized before placing adhesive.



7 In the canal, apply:
- The adhesive, then dry
- The activator, then dry
- The composite resin cement
Total C-Ram



8 Immediately after insertion, perform an initial rapid light curing to remove the excess resin cement, then perform a second, longer curing to ensure that the material has set properly.



9 Appearance of inlay core before crown impression.



10 Lingual view of the adaptation.



11 Final appearance after placement of usual tooth.

*Internal report, Itena Clinical, "Numerys GF".

Numerys HC¹

Resin/ceramic hybrid blocks and disks



DISK FORMAT DESIGNED FOR LABORATORIES

Key points

Compliance with chewing constraints

- > Flexural & compressive strength

Fast, suitable machining

- > No firing or glazing steps
- > Anatomically correct marginal adaptation (labial and lingual surfaces)

Natural aesthetic appearance

- > Close to the natural shade of the tooth, without the need for staining
- > Several shades available (6) depending on the clinical case

Indication

Indirect fabrication of metal-free prosthodontic components : Inlays, Onlays, Veneers, Crowns, Implant-supported crowns.

Numerys HC - 5 Blocks

	Size 12	Size 14 L
Shade A1	NYS-12A1	NYS-14A1
Shade A2	NYS-12A2	NYS-14A2
Shade A3	NYS-12A3	NYS-14A3
Shade A3.5	NYS-12A3.5	NYS-14A3.5
Shade B3	NYS-12B3	NYS-14B3
Shade E	NYS-12E	NYS-14E

Numerys HC - 1 disk ø 98 mm - height 16 mm

Shade A2	NYS-D16A2
Shade A3	NYS-D16A3
Shade A3.5	NYS-D16A35
Shade B3	NYS-D16B3
Shade E	NYS-D16E

Clinical case

Clinical case by Dr Marco Morello



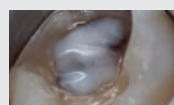
1 Preoperative X-ray on 36.



2 Initial situation prior to treatment.



3 Amalgam placed under nerve block anesthesia and built up to edge of the subgingival part using **Reflectys Flow A3**.



4 Base of cavity protected with **MTA Biorep**.



5 A layer of **Reflectys Flow A3** is applied to eliminate undercuts, following the standard bonding protocol. Light curing for 20 seconds followed by detailed polishing of the preparation.



6 EDigital impression of the prepared tooth and neighboring teeth.



7 Machining of the **Numerys HC A2/12** block.



8 Etching of enamel and dentin with **Dentoetch** for 10 seconds, isolating the mesial surface of 18 with Teflon tape.



9 Apply a layer of glycerin and light cure each face of the inlay onlay for 10 seconds.



10 Inlay onlay after bonding and polishing.

Totalcem¹

SPECIAL METAL

Resin cement
for final bonding



Automix
Syringe

Mixing tips

EXTRA FINE

FINE

Key points

Bonding quality and durability

- > Self-adhesive, thanks to 4-META monomer, which promotes matrix infiltration into hard tissue*
- > Sealed in the presence of oral fluids (Water sorption: 12µg/mm, Water solubility 7µg/mm)**

Dual-cure

- > **Self-curing** = Adhesion of areas where light does not reach
- > **Light-curing** = faster setting and removal of excess material

Time-saving

- > 1 single product, self-adhesive and self-etching (4-META monomer)*

Indication

Self-etching / self-adhesive resin cement for metal.

Totalcem	Translucent Shade	Shade A2
8 g Syringe + 10 mixing tips + 10 thin intraoral tips + 10 extra-thin intraoral tips	TTLCEM-TR	TTLCEM-A2
Value Pack 3 Translucent syringes (8g) + 30 mixing tips + 30 thin intraoral tips + 30 extra-thin intraoral tips	TCEM3-VPTR	TCEM3-VPA2

Tips		
Refill with 20 mixing tips		DTEM-20
Refill with 25 mixing tips + 25 thin intraoral tips (Length: 100 mm ø 1.1 mm)		DCE-50
Refill with 25 mixing tips + 25 extra-thin intraoral tips (Length: 135 mm ø 0.09 mm)		DCEXXF-50

*Mark, A. (2006). 24 hour Shear Bond Strength of Ceramic to Dentin Using Three Cement Systems.

https://www.bjmlabs.com/images/scientific_papers/Porcelain%20Fix/4%20Latta%20Evaluation%20of%2024%20hours%20shear%20bond%20strength-%2010.2006.pdf

** (2009). Polymer-based filling, restorative and luting materials. Dentistry. <https://www.iso.org/standard/23041.html>

Total C-ram¹

SPECIAL CERAMIC

Resin cement
for final bonding



Key points

Bonding quality

- > Self-adhesive, by acid monomers that ensure a strong bond with dentin and enamel*

Dual cure

- > **Self-curing** = Adhesion of areas where light does not reach
- > **Light-curing** = faster setting and removal of excess material

Time-saving

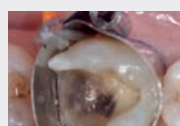
- > 1 single product, self-adhesive and self-etching (acid monomers + phosphoric acid esters)

Natural aesthetic finish

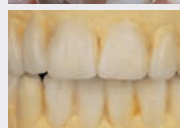
- > Aesthetic bonding of veneers, thanks to the thin film thickness (10µm)
- > 3 shades available

Clinical case

Clinical case by Dr Pascal Zyman



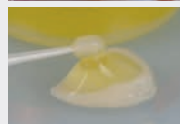
Initial view.



1 Wax up.



2 Lithium disilicate veneers.



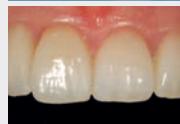
3 Application of hydrofluoric acid **Ceram-Etch** for 20 seconds followed by rinse.



4 Application of silane **Silan-It**.



5 Application of **Total C-Ram** opaque dentin shade on cervical and middle areas and translucent shade on the incisal edge.



Final view.

Indication

Self-etching & self-adhesive resin cement for ceramic.

Total C-ram	Translucent Shade	Opaque Dentin Shade	White Shade
8 g Syringe + 10 mixing tips + 10 thin intraoral tips + 10 extra-thin intraoral tips	TTCRAM-TR	TTCRAM-OD	TCRAM-BLC

Tips	
Refill with 20 mixing tips	DTEM-20
Refill with 25 mixing tips + 25 thin intraoral tips (Length: 100 mm ø 1.1 mm)	DCE-50
Refill with 25 mixing tips + 25 extra-thin intraoral tips (Length: 135 mm ø 0.09 mm)	DCEXXF-50

*Polassi, M. (2017). Bonding ability of self-adhesive resin-cements after dentin biomodification with hyaluronic acid. Journal of Adhesion Science and Technology, 32 (10), pp. 1033-1043.
<https://www.tandfonline.com/action/showCitFormats?doi=10.1080%2F01694243.2017.1402403>

Ceram-Etch¹

Etching gel
(hydrofluoric acid 9%)



Key points

Stays in place

Creates micro-porosities to enhance bonding resin adhesion

Indications

The intrados preparation of vitreous ceramics crowns, veneers, and inlays before cementation with resin type composites. It is also indicated for all-ceramic and metal-ceramic fractured crown reparation. For an optimal preparation, it is advised to apply Silan-IT on the etched surface afterwards.

Ceram-Etch

2x 1.3 g syringes + 4 tips

CRAM-ETCH

Silan-It¹

Adhesion primer



Key points

Strengthens adhesion

- > Single component silane
- > Enhanced adhesion of ceramics and fiberglass

Indication

- **Single-component** used as an adhesive primer to reinforce bonding between glass-based ceramics during fracture reparation.
- **Also indicated for the preparation of fiber-based elements** during fiber-reinforced reconstructions (posts and inlay cores).

Silan-It

5 ml bottle

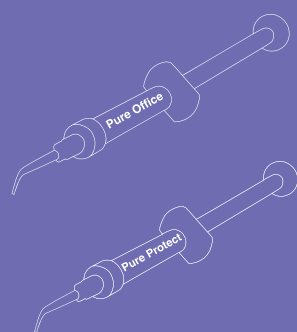
SILAN-IT



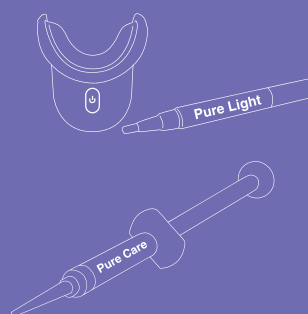


Care

Pure Office 46
Pure Protect 48



Pure Light 47
Pure Care 48



Pure Office^{7a}

In-office root canal whitening kits



Key points

Professional whitening

- > In-office treatment in 1 to 3 steps

Whitening quality

- > Neutral PH to facilitate complete release of peroxide and ensure patient comfort

Mint flavor

Choice of packaging

- > **Pure Office** whitening gel syringe(s) (35% Hydrogen Peroxide)
- > Gingival barrier syringe(s)

Indications

- Brightening of discolored, devitalized teeth
- Brightening of discolored teeth caused by disease, by injury or iatrogenically, as alternative to a crown or veneer.
- Treatment of tooth discolorations caused by prescription drugs (e.g. tetracycline)

Clinical case



1 Remove the syringe from the fridge and allow it to reach room temperature. Protect the tooth to be whitened by preparing an operating field.



2 Assess the quality of the root canal obturation to avoid any risk of the product spreading.



3 Clean the pulp chamber: remove pulp tissue and necrotic tissue residue.



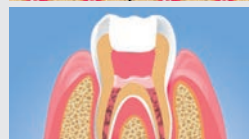
4 The canal must have root canal obturation material removed to around 3 mm under the amelocemental junction. Isolate the gutta-percha obturation by placing a small glass ionomer plug.



5 Place the mixing tip on the **Pure Office** syringe.



6 Distribute the product in the prepared canal and compress the product into the cavity using a micro-applicator.



7 Complete temporary closure using a watertight material.



8 Perform a check 7 days after the procedure. Repeat application of the product if required.

When the whitening is appropriate, rinse, dry and apply a temporary obturation for 5 weeks before the final reconstruction.

Pure Office

Starter kit 1x 5 g syringe of Pure Office tooth whitening gel + 2 syringes of Pure Protect gingival barrier

PROF35-C1*

Value Pack 3x 5 g syringes of Pure Office tooth whitening gel + 6 syringes of Pure Protect gingival barrier

PROF35-RF3*

*Other references, contact us according to country: PROF35-C1W, PROF35-R3W

Pure Light^{7c}

Premium home whitening kit



Key points

Whitening quality

- > No acid attack on dentin, neutral PH
- > High gel viscosity

Convenience of use

- > Gel whitening pen
- > 10 or 15 min treatment time
- > Mouthpiece to retain the gel during treatment

Storage and transport at room temperature

- > Patented HPS* formula

How to use



1. Brush your teeth and rinse with water.



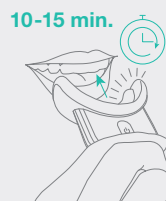
2. Twist the bottom part of the teeth whitening pen until the gel appears in the bristles.



3. Apply the gel on tooth surface.



4. Put the mouthpiece in your mouth and softly bite it.



10-15 min.

5. Turn on the LED light:
• 15 minutes treatment (Blue Mode).
• 10 minutes treatment (Blue & Red Mode).



6. Rinse your mouth again afterwards.



7. Rinse the mouthpiece with water.



8. Appreciate the final result.

Indication

Ambulatory tooth whitening based on 6% hydrogen peroxide superior.

Pure Light

Premium home whitening kit

PRLI2.5-3

*Hydrogen Peroxide Superior

Pure Protect^{7a}

Gingival protection gel



Key points

- > Protects the gum during in office treatment
- > Prevention of gingival sensitivity

Indication

For coating gingiva during in-office bleaching procedures.

Pure Protect

4x 1.5g syringes of gingival barrier

PRP-BG

Pure Care^{7b}

Desensitizing gel



Key point

- > Convenience to use

Indication

For after-treatment of the teeth after a bleaching procedure.

Pure Care

4x 2.3 g syringes of desensitizer

PRC-DSB





Accessories

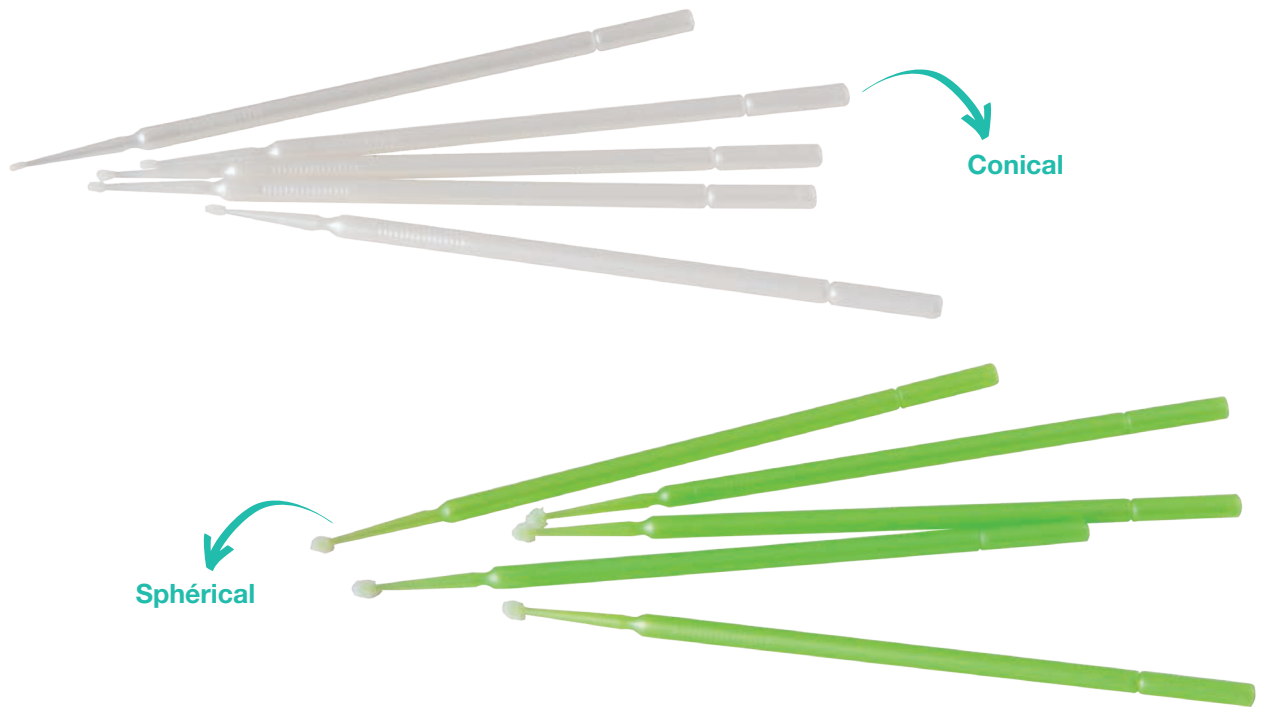
Micro-applicators 52



Aireo 53



Micro-applicators⁸



Indications

Used for application of :

- Etching
- Bonding
- Hole lining
- Fluorine protective paint
- Hemostatic agent
- Pit and groove sealant, etc

Micro-applicators

100 white conical micro-applicators	AFB-100
100 green spherical micro-applicators	ASV-100

Aireo V-Lock System⁴

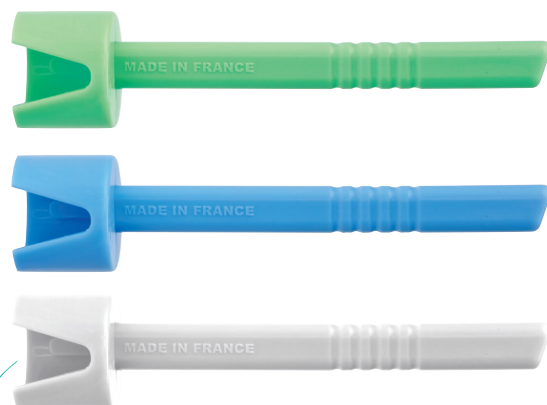
Disposable air/water syringe tips

Key points

Flexible tip:

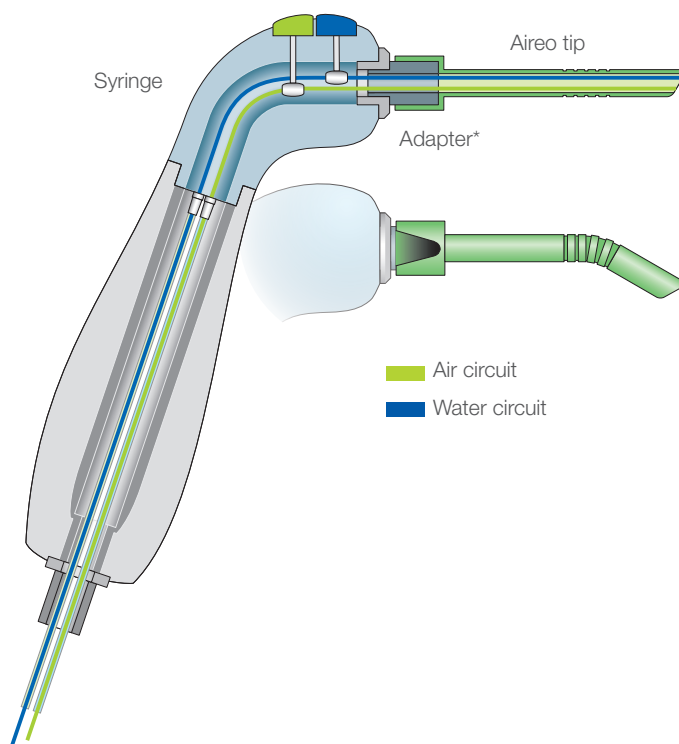
- > Easy for the dental surgeon to keep the required angle

Reduced risk of microbial crosscontamination



V-notch for easy insertion

DIAGRAM OF CIRCUIT



■ Air circuit
■ Water circuit

Box of 200 Aireo V-Lock System tips

Green	AIRU200-V
Blue	AIRU200-B
White	AIRU200-A

⁴Compatible with Pierre Rolland adapters

Index

A

Aireo page 53

C

Ceram-Etch page 42

D

Dentoclic Drills page 18

Dentoclic Fiberglass posts page 17

Dentoclic Kits Posts & Drills page 19

Dentoclic Pins page 15

Dentoclic Sandblasted titanium posts page 16

Dentoclic Stainless steel posts & calcinable posts page 14

Dentocore page 20

Dentocore Body page 20

Dentocrown HD page 32

Dentoetch page 27

Dentotemp page 34

H

Hydrospeed HD page 31

I

Iperbond Max page 26

IsoSafe page 8

M

MTA Biorep page 12

MTA Bioseal page 13

Micro-applicators page 52

N

Numerys GF page 38

Numerys HC page 39

P

Polish HD page 25

Prevent Seal page 6

Provitemp page 36

Pure Care page 48

Pure Light page 47

Pure Office page 46

Pure Protect page 48

R

Reflectys page 22

Reflectys Flow page 22

S

Silan-It page 42

T

Totalcem page 40

Total C-ram page 41

Traxodent page 30

References

1. Medical device Class IIa
CE 0425 - Manufacturer: Itena Clinical
2. Medical device Classe I
Manufacturer: Sanctuary Health SDN BHD, Malaysia
Mandataire: Welkang Ltd, United Kingdom
3. Medical device Classe IIb
CE 0425 - Manufacturer: Itena Clinical
4. Medical device I
Manufacturer: Itena Clinical
5. Medical device Classe IIa
CE 0483 - Manufacturer: EVE GmbH, Germany
6. Medical device Classe IIa
CE 2460 - Manufacturer: Premier Dental, USA
Mandataire: MDSS GmbH, Germany
- 7a. Medical device Classe IIa
CE 0297 - Manufacturer: MANI Medical, Germany
- 7b. Medical device Classe I
Manufacturer: MANI Medical, Germany
- 7c. Cosmetic product
Manufacturer: Cavex Holland BV, Netherlands
8. Medical device Classe I
Manufacturer: HUANGHUA PROMISEE, China
Mandataire: MEDNET GmbH, Germany
9. Medical device Classe I
Manufacturer: Medmix Switzerland AG, Switzerland
Mandataire: Medmix GmbH, Germany

Reserved for professional dental use, not reimbursed by health insurance organizations under the LPPR.
7c. Non-reimbursed cosmetic product. Carefully read the instructions and labeling before use.



Enhance your
daily practice



Enhance your daily practice

itena-clinical.com

Central Parc Bat B, 97 Allée de la Louve, 93420 Villepinte - FRANCE
T. + 33 1 45 91 61 40

Join us!

